

GOMORI TRICHROME STAIN KIT

KH07002-125/500 mL

DESCRIPTION AND USE

Gomori Trichrome Stain is used to demonstrate muscle fiber and cytoplasm in red, nuclei in black and collagen containing connective tissue in blue. Hematoxylin Weigert's Reagents are included to improve staining balance.

Designed for research use only, it is not approved for human or animal use, or clinical diagnosis. Depending on the sample type, it is possible that times need to be modified. BQC recommends to perform a test first.

MATERIALS SUPPLIED

Item	Size
Hematoxylin Weigert's Reagent A	125/500 mL
Hematoxylin Weigert's Reagent B	125/500 mL
Bovin fixative	125/500 mL
0.5 % Glacial Acetic Acid	125/500 mL
Trichrome Stain	125/500 mL

STORAGE AND STABILITY

On receipt store kit components at RT. Do not use after the expiration date stated on the packaging.

RELATED PRODUCTS

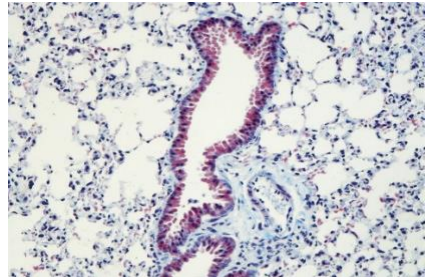
Product	Reference
Harris Hematoxylin-Eosin Stain Kit	KH07005
Alcian Blue Stain Kit	KH07001
Periodic Acid Schiff (PAS) – Alcian Blue	KH07010

SHORT PROCEDURE

0		Deparaffinize sample and hydrate with ddH ₂ O (BQC protocol available)
1	60 min	Bovin fixative at 60 °C
2	10 min	Allow the solution to cool. Wash with tap water
3	10 min	Mix equal parts of Hematoxylin Weigert's Reagents (A and B) and add to the sample
4	10 min	Wash in running tap water
5	20 min	Add Trichrome Stain. Solution can be reused if filtered.
6	2 min	Add 0.5% Glacial Acetic Acid
7		Dehydrate with graded ethanol (not included), clear and coverslip**

**Dehydration only with ethanol 50% and Xylol 100 % is recommended

STAINING EXAMPLE



Histological lung section from a wild type C57BL/6J mouse stained with BQC Gomori Trichrome Stain Kit

FOR RESEARCH USE ONLY